

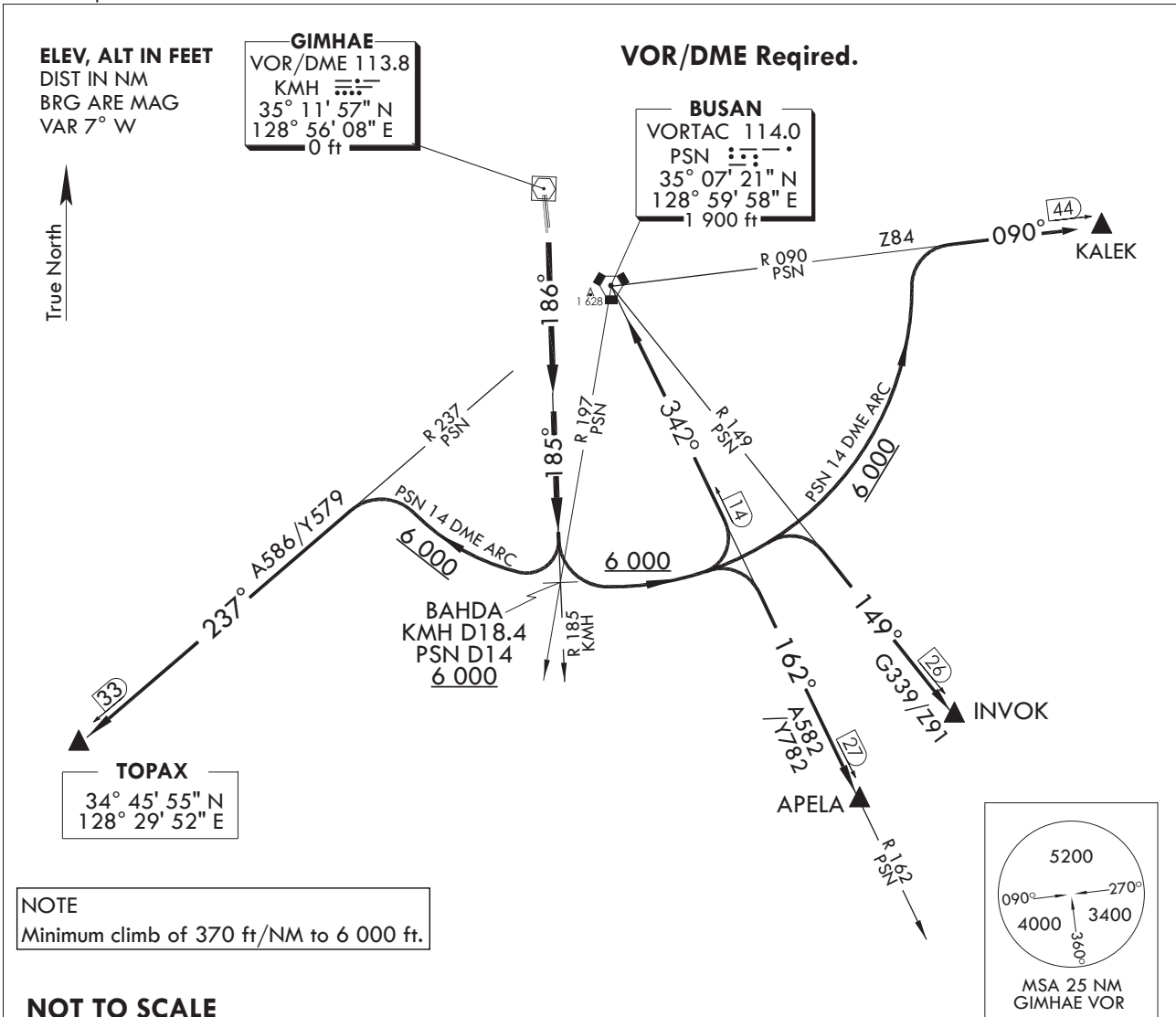
STANDARD DEPARTURE CHART
INSTRUMENT (SID)

TRANSITION ALT 14 000
TRANSITION LVL FL 140

GIMHAE DEP 125.5 363.8
GIMHAE TWR 118.1 233.3
118.450 236.6

BUSAN/Gimhae INTL(RKPK)
RWY 18L/R
BAHDA 1

Note : Departure under U.S TERPS.



DEPARTURE ROUTE DESCRIPTION

BAHDA 1 DEPARTURE

RUNWAY 18L/R : Climb 6 000 ft via heading 186° to intercept R 185 KMh to cross BAHDA at or above 6 000 ft, then via(TRANSITION routes) and climb assigned altitude by ATC.

KALEK transition : Left turn and proceed via the PSN D14 ARC to intercept R 090 PSN then R 090 PSN to KALEK.

INVOK transition : Left turn and proceed via the PSN D14 ARC to intercept R 149 PSN then R 149 PSN to INVOK.

APELA transition : Left turn and proceed via the PSN D14 ARC to intercept R 162 PSN then R 162 PSN to APELA.

BUSAN(VORTAC) transition : Left turn and proceed via the PSN D14 ARC to intercept R 162 PSN then R 162 PSN to BUSAN VORTAC(PSN).

TOPAX transition : Right turn and proceed via the PSN D14 ARC to intercept R 237 PSN then R 237 PSN to TOPAX.

Change : Page control.

INTENTIONALLY

LEFT

BLANK

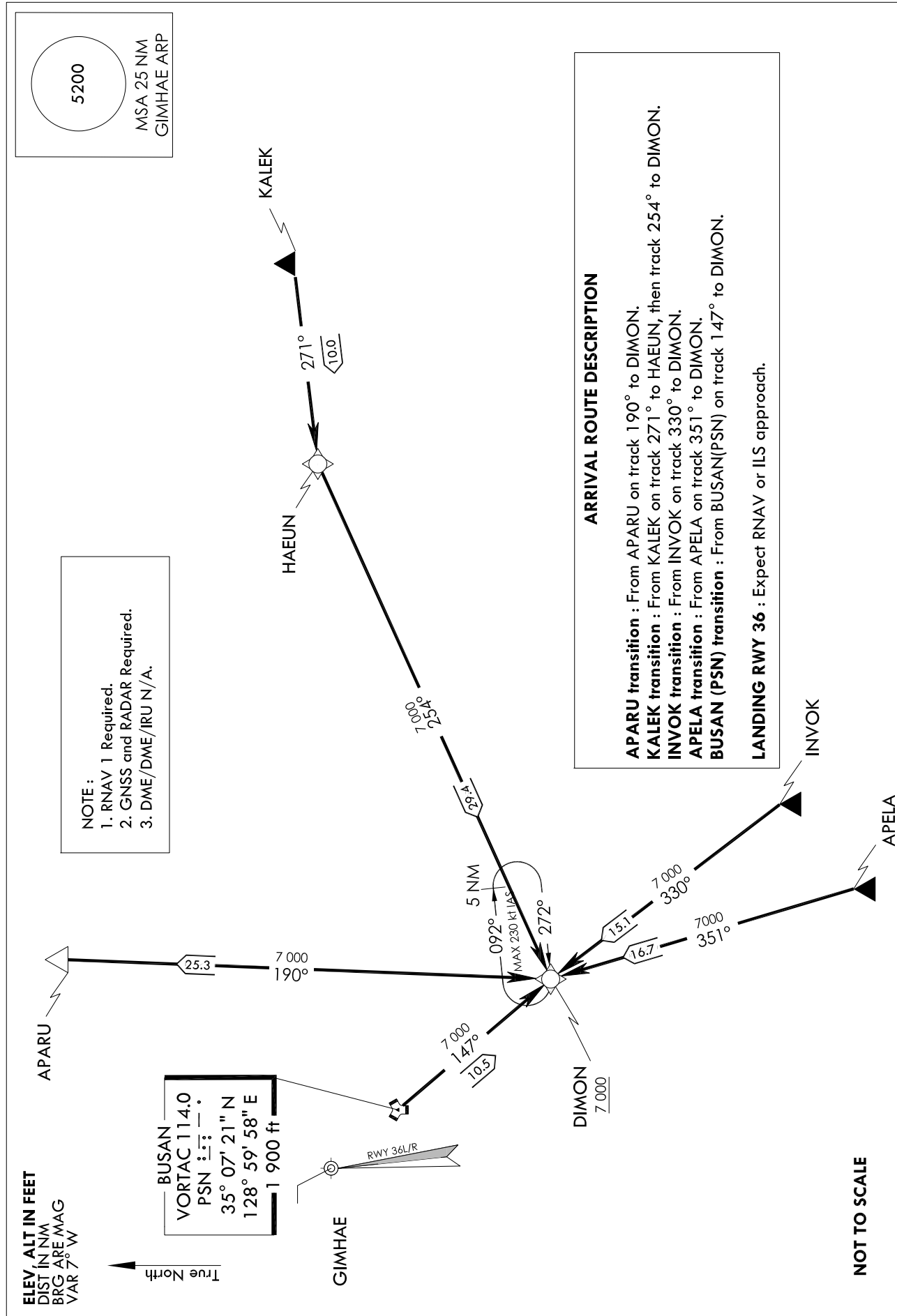
STANDARD ARRIVAL CHART
INSTRUMENT (STAR) - ICAO

TRANSITION ALT 14 000
TRANSITION LVL FL 140

GIMHAE APP	125.5
	364.0
GIMHAE TWR	118.1 118.45
	233.3 236.6

BUSAN/Gimhae Intl(RKPK)
RWY 36L/R
RNAV(GNSS) DIMON 1

Note : Arrival under U.S. TERPS.



Change : Page control.

BUSAN/Gimhae INTL(RKPK)
RWY 36L/R
RNAV(GNSS) DIMON 1

AERONAUTICAL DATA TABULATION

Standard Instrument Arrival Procedure Coding Tables

RNAV DIMON 1 - APARU Transition

Serial Number	Path Descriptor	Waypoint Identifier	Fly-over	Course/Track °M(°T)	Distance (NM)	Turn direction	Altitude (ft)	Speed (kt)	Coordinates	VPA/TCH	Navigation specification	Remarks
001	TF	APARU	-	-	-	-	-	-	352442.1 N 1290932.1 E	-	RNAV 1	-
002	TF	DIMON	-	189.85(182.38)	25.30	-	+7 000	-	345923.1 N 1290815.3 E	-	RNAV 1	-

RNAV DIMON 1 - KALEK Transition

Serial Number	Path Descriptor	Waypoint Identifier	Fly-over	Course/Track °M(°T)	Distance (NM)	Turn direction	Altitude (ft)	Speed (kt)	Coordinates	VPA/TCH	Navigation specification	Remarks
001	TF	KALEK	-	-	-	-	-	-	351232.0 N 1295305.0 E	-	RNAV 1	-
002	TF	HAEUN	-	271.01(263.54)	10.00	-	-	-	351123.8 N 1294057.4 E	-	RNAV 1	-
003	TF	DIMON	-	253.55(246.08)	29.39	-	+7 000	-	345923.1 N 1290815.3 E	-	RNAV 1	-

RNAV DIMON 1 - INVOK Transition

Serial Number	Path Descriptor	Waypoint Identifier	Fly-over	Course/Track °M(°T)	Distance (NM)	Turn direction	Altitude (ft)	Speed (kt)	Coordinates	VPA/TCH	Navigation specification	Remarks
001	TF	INVOK	-	-	-	-	-	-	344719.0 N 1291923.0 E	-	RNAV 1	-
002	TF	DIMON	-	330.29(322.83)	15.13	-	+7 000	-	345923.1 N 1290815.3 E	-	RNAV 1	-

RNAV DIMON 1 - APELA Transition

Serial Number	Path Descriptor	Waypoint Identifier	Fly-over	Course/Track °M(°T)	Distance (NM)	Turn direction	Altitude (ft)	Speed (kt)	Coordinates	VPA/TCH	Navigation specification	Remarks
001	TF	APELA	-	-	-	-	-	-	344323.0 N 1291400.0 E	-	RNAV 1	-
002	TF	DIMON	-	351.01(343.54)	16.66	-	+7 000	-	345923.1 N 1290815.3 E	-	RNAV 1	-

RNAV DIMON 1 - BUSAN(PSN) Transition

Serial Number	Path Descriptor	Waypoint Identifier	Fly-over	Course/Track °M(°T)	Distance (NM)	Turn direction	Altitude (ft)	Speed (kt)	Coordinates	VPA/TCH	Navigation specification	Remarks
001	TF	BUSAN(PSN)	-	-	-	-	-	-	350721.5 N 1285958.5 E	-	RNAV 1	-
002	TF	DIMON	-	146.93(139.46)	10.47	-	+7 000	-	345923.1 N 1290815.3 E	-	RNAV 1	-

HOLDING PROCEDURE

Holding Identification	Path Descriptor	Waypoint Identifier	Fly-over	Course/Track °M(°T)	Distance (NM)	Turn direction	Altitude (ft)	Speed (kt)	Coordinates	VPA/TCH	Navigation specification	Remarks
RNAV DIMON 1	HIM	DIMON	-	271.7(264.2)	5	R	-10 000 +7 000	-230	345923.1 N 1290815.3 E	-	-	-

Change : Page control.

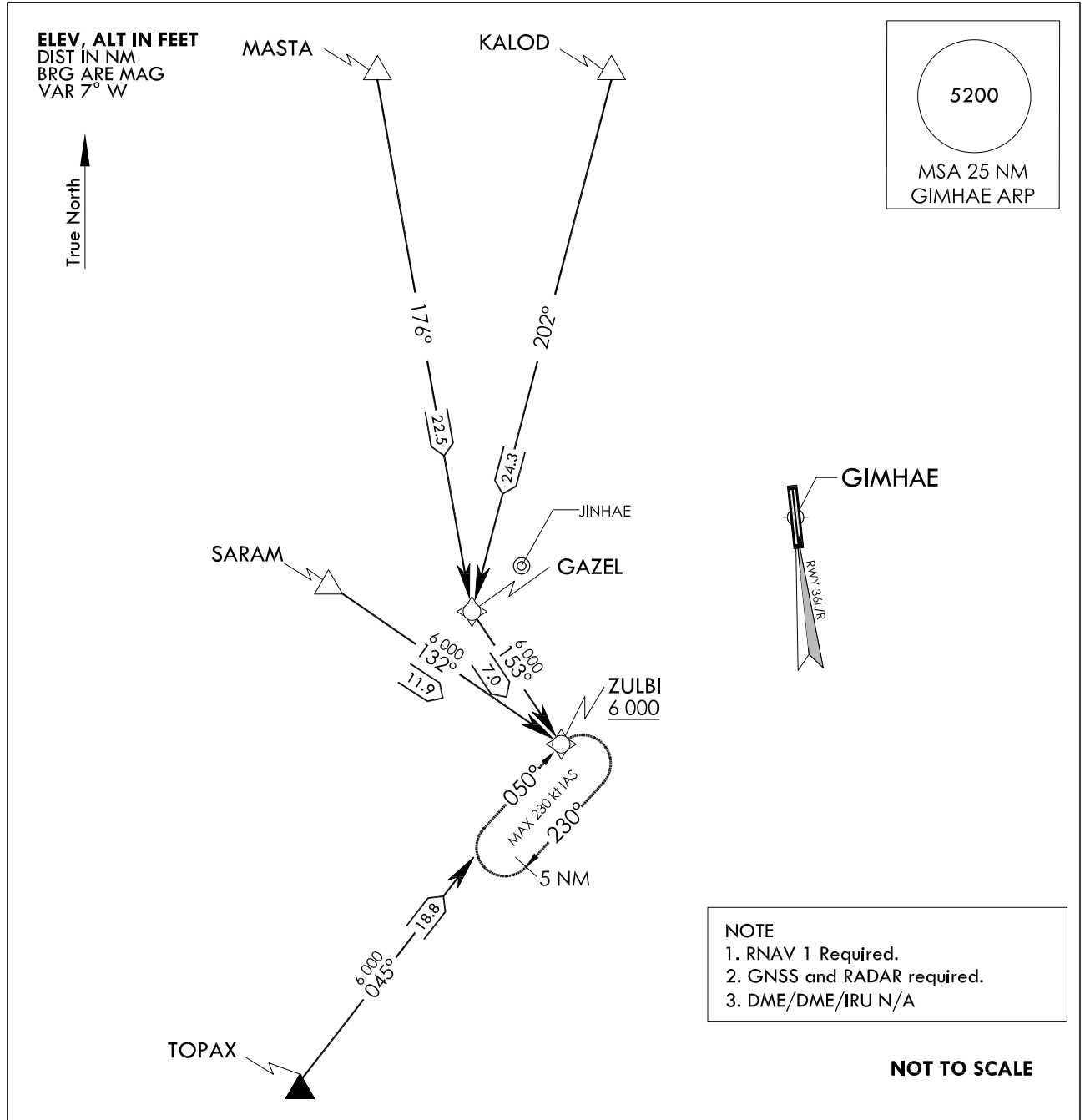
STANDARD ARRIVAL CHART
INSTRUMENT (STAR) - ICAO

TRANSITION	ALT	14 000
TRANSITION	LVL	FL 140

GIMHAE APP	125.5
	364.0
GIMHAE TWR	118.1 118.45
	233.3 236.6

BUSAN/Gimhae Intl(RKPK)
RWY 36L/R
RNAV(GNSS) ZULBI 2

Note : Arrival under U.S. TERPS.



ARRIVAL ROUTE DESCRIPTION

ZULBI 2 ARRIVAL

RWY 36L/R : Expect RNAV or ILS approach.

MASTA transition : From MASTA on track 176° to GAZEL, then track 153° to ZULBI.

KALOD transition : From KALOD on track 202° to GAZEL, then track 153° to ZULBI.

SARAM transition : From SARAM on track 132° to ZULBI.

TOPAX transition : From TOPAX on track 045° to ZULBI.

Change : Page control.

BUSAN/Gimhae INTL(RKPK)
RWY 36L/R
RNAV(GNSS) ZULBI 2

AERONAUTICAL DATA TABULATION

Standard Instrument Arrival Procedure Coding Tables

RNAV ZULBI 2 - MASTA Transition

Serial Number	Path Descriptor	Waypoint Identifier	Fly-over	Course/Track °M(°T)	Distance (NM)	Turn direction	Altitude (ft)	Speed (kt)	Coordinates	VPA/TCH	Navigation specification	Remarks
001	TF	MASTA	-	-	-	-	-	-	352847.0 N 1283340.0 E	-	RNAV 1	-
002	TF	GAZEL	-	176.25(168.79)	22.50	-	-	-	350640.3 N 1283900.0 E	-	RNAV 1	-
002	TF	ZULBI	-	153.38(145.87)	7.01	-	+6 000	-	350051.7 N 1284347.2 E	-	RNAV 1	-

RNAV ZULBI 2 - KALOD Transition

Serial Number	Path Descriptor	Waypoint Identifier	Fly-over	Course/Track °M(°T)	Distance (NM)	Turn direction	Altitude (ft)	Speed (kt)	Coordinates	VPA/TCH	Navigation specification	Remarks
001	TF	KALOD	-	-	-	-	-	-	353012.1 N 1284626.5 E	-	RNAV 1	-
002	TF	GAZEL	-	202.04(194.57)	24.27	-	-	-	350640.3 N 1283900.0 E	-	RNAV 1	-
002	TF	ZULBI	-	153.38(145.87)	7.01	-	+6 000	-	350051.7 N 1284347.2 E	-	RNAV 1	-

RNAV ZULBI 2 - SARAM Transition

Serial Number	Path Descriptor	Waypoint Identifier	Fly-over	Course/Track °M(°T)	Distance (NM)	Turn direction	Altitude (ft)	Speed (kt)	Coordinates	VPA/TCH	Navigation specification	Remarks
001	TF	SARAM	-	-	-	-	-	-	350736.3 N 1283146.7 E	-	RNAV 1	-
002	TF	ZULBI	-	131.74(124.27)	11.94	-	+6 000	-	350051.7 N 1284347.2 E	-	RNAV 1	-

RNAV ZULBI 2 - TOPAX Transition

Serial Number	Path Descriptor	Waypoint Identifier	Fly-over	Course/Track °M(°T)	Distance (NM)	Turn direction	Altitude (ft)	Speed (kt)	Coordinates	VPA/TCH	Navigation specification	Remarks
001	TF	TOPAX	-	-	-	-	-	-	344555.3 N 1282951.7 E	-	RNAV 1	-
002	TF	ZULBI	-	044.92(037.46)	18.81	-	+6 000	-	350051.7 N 1284347.2 E	-	RNAV 1	-

HOLDING PROCEDURE

Holding Identification	Path Descriptor	Waypoint Identifier	Fly-over	Course/Track °M(°T)	Distance (NM)	Turn direction	Altitude (ft)	Speed (kt)	Coordinates	VPA/TCH	Navigation specification	Remarks
RNAV ZULBI 1	HM	ZULBI	-	050(042.5)	5	R	-10 000 +6 000	-230	350051.7 N 1284347.2 E	-	-	-

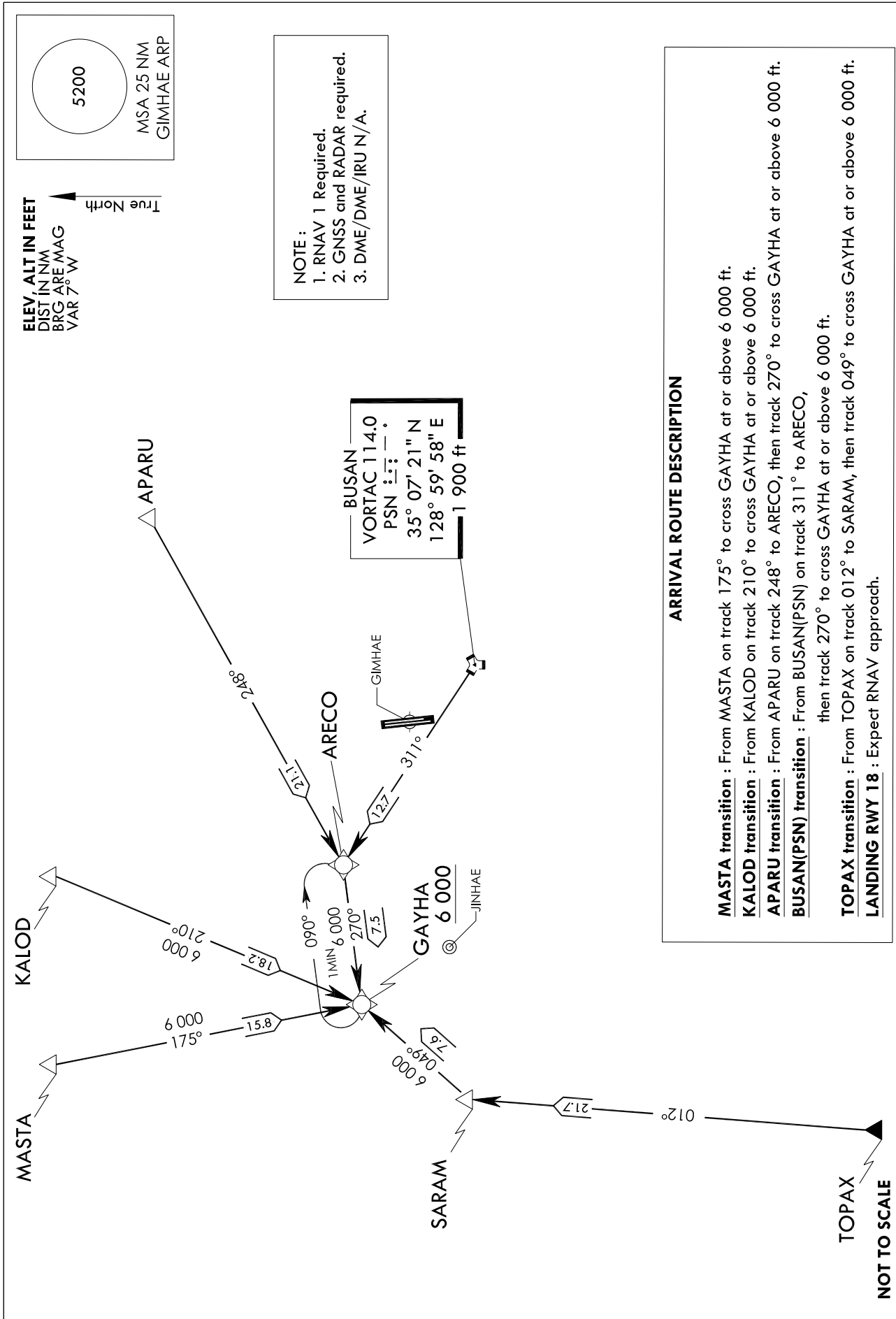
STANDARD ARRIVAL CHART
INSTRUMENT (STAR) - ICAO

TRANSITION ALT 14 000
TRANSITION LVL FL 140

GIMHAE APP	125.5
	364.0
GIMHAE TWR	118.1 118.45
	233.3 236.6

BUSAN/Gimhae Intl(RKPK)
RWY 18L/R
RNAV(GNSS) GAYHA 2

Note : Arrival under U.S. TERPS.



ELEV. ALT IN FEET
DIST IN NM
BRG ARE MAG
VAR 7° W

True North

NOTE :
1. RNAV 1 Required.
2. GNSS and RADAR required.
3. DME/DME/IRU N/A.

ARRIVAL ROUTE DESCRIPTION

MASTA transition : From MASTA on track 175° to cross GAYHA at or above 6 000 ft.
KALOD transition : From KALOD on track 210° to cross GAYHA at or above 6 000 ft.
APARU transition : From APARU on track 248° to ARECO, then track 270° to cross GAYHA at or above 6 000 ft.
BUSAN(PSN) transition : From BUSAN(PSN) on track 311° to ARECO, then track 270° to cross GAYHA at or above 6 000 ft.
TOPAX transition : From TOPAX on track 012° to SARAM, then track 049° to cross GAYHA at or above 6 000 ft.
LANDING RWY 18 : Expect RNAV approach.

Change : Page control.

BUSAN/Gimhae INTL(RKPK)
RWY 18L/R
RNAV(GNSS) GAYHA 2

AERONAUTICAL DATA TABULATION

Standard Instrument Arrival Procedure Coding Tables

GNSS GAYHA 2 - MASTA Transition

Serial Number	Path Descriptor	Waypoint Identifier	Fly-over	Course/Track °M(°T)	Distance (NM)	Turn direction	Altitude (ft)	Speed (kt)	Coordinates	VPA/ TCH	Navigation specification	Remarks
001	TF	MASTA	-	-	-	-	-	-	352847.0 N 1283340.0 E	-	RNAV 1	-
002	TF	GAYHA	-	174.74(167.28)	15.77	-	+6 000	-	351322.4 N 1283754.4 E	-	RNAV 1	-

GNSS GAYHA 2 - KALOD Transition

Serial Number	Path Descriptor	Waypoint Identifier	Fly-over	Course/Track °M(°T)	Distance (NM)	Turn direction	Altitude (ft)	Speed (kt)	Coordinates	VPA/ TCH	Navigation specification	Remarks
001	TF	KALOD	-	-	-	-	-	-	353012.1 N 1284626.5 E	-	RNAV 1	-
002	TF	GAYHA	-	210.07(202.61)	18.19	-	+6 000	-	351322.4 N 1283754.4 E	-	RNAV 1	-

GNSS GAYHA 2 - APARU Transition

Serial Number	Path Descriptor	Waypoint Identifier	Fly-over	Course/Track °M(°T)	Distance (NM)	Turn direction	Altitude (ft)	Speed (kt)	Coordinates	VPA/ TCH	Navigation specification	Remarks
001	TF	APARU	-	-	-	-	-	-	352442.1 N 1290932.1 E	-	RNAV 1	-
002	TF	ARECO	-	248.36(240.90)	21.14	-	-	-	351422.1 N 1284659.1 E	-	RNAV 1	-
002	TF	GAYHA	-	269.91(262.44)	7.50	-	+6 000	-	351322.4 N 1283754.4 E	-	RNAV 1	-

GNSS GAYHA 2 - BUSAN(PSN) Transition

Serial Number	Path Descriptor	Waypoint Identifier	Fly-over	Course/Track °M(°T)	Distance (NM)	Turn direction	Altitude (ft)	Speed (kt)	Coordinates	VPA/ TCH	Navigation specification	Remarks
001	TF	BUSAN(PSN)	-	-	-	-	-	-	350721.5 N 1285958.5 E	-	RNAV 1	-
002	TF	ARECO	-	310.84(303.38)	12.74	-	-	-	351422.1 N 1284659.1 E	-	RNAV 1	-
002	TF	GAYHA	-	269.91(262.44)	7.50	-	+6 000	-	351322.4 N 1283754.4 E	-	RNAV 1	-

GNSS GAYHA 2 - TOPAX Transition

Serial Number	Path Descriptor	Waypoint Identifier	Fly-over	Course/Track °M(°T)	Distance (NM)	Turn direction	Altitude (ft)	Speed (kt)	Coordinates	VPA/ TCH	Navigation specification	Remarks
001	TF	TOPAX	-	-	-	-	-	-	344555.3 N 1282951.7 E	-	RNAV 1	-
002	TF	SARAM	-	011.62(004.15)	21.71	-	-	-	350736.3 N 1283146.7 E	-	RNAV 1	-
002	TF	GAYHA	-	048.53(041.07)	7.64	-	+6 000	-	351322.4 N 1283754.4 E	-	RNAV 1	-

HOLDING PROCEDURE

Holding Identification	Path Descriptor	Waypoint Identifier	Fly-over	Course/Track °M(°T)	Time (min)	Turn direction	Altitude (ft)	Speed (kt)	Coordinates	VPA/ TCH	Navigation specification	Remarks
RNAV GAYHA 1	HM	GAYHA	-	270(262.5)	1	R	-10 000 +6 000	-210	351322.4 N 1283754.4 E	-	-	-